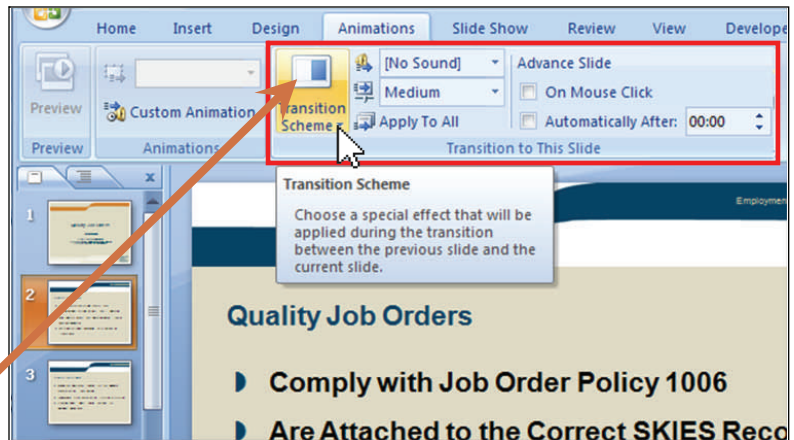


Self-Running PowerPoint Presentation

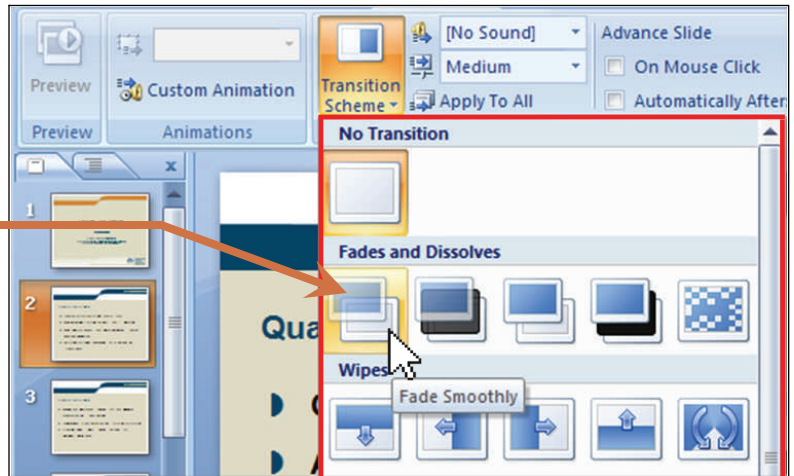
This short guide will show you how to create self-running presentations. You will learn to set up a PowerPoint presentation so that all of the slides automatically move to the next slide. This technique can be used to imitate a video or for presentations that are self-explanatory.


1.) The first step is to open up the PowerPoint presentation I wish to make self-running, starting at the *second* slide.

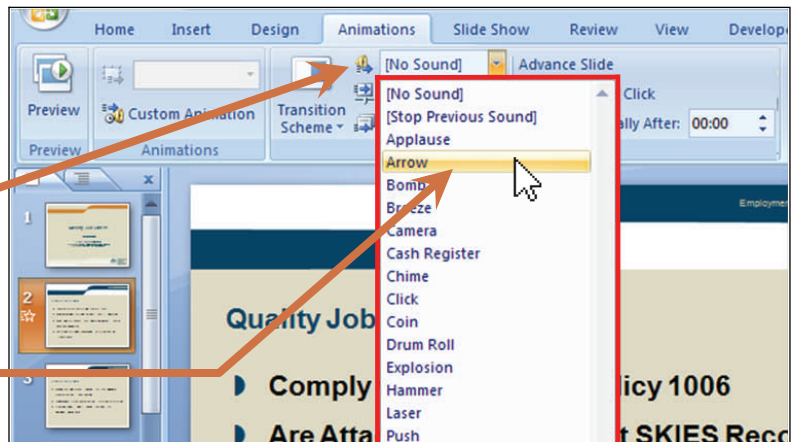
I go to the **Transition to This Slide** section of the **Animations** tab on the **Office** Ribbon, and click on the “Transition Scheme” icon.



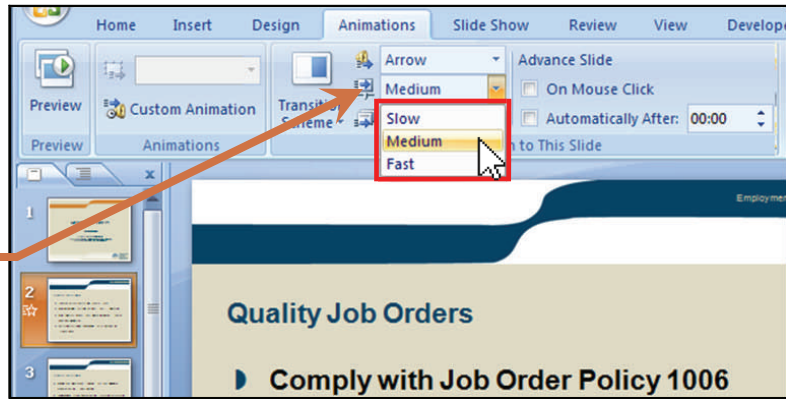
2.) A menu of slide transition option appears; rolling my cursor over them allows a preview of each effect. I'll choose a “smooth fade”, as shown here.



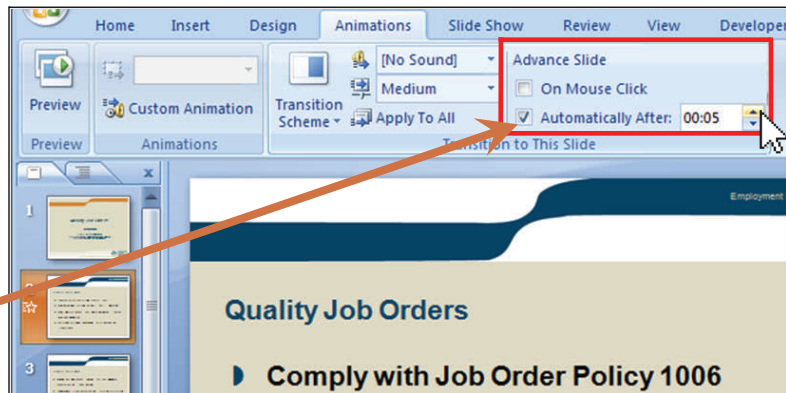
3.) Next, I'll select a sound to play between the previous slide — slide #1 — and this one. By clicking the down arrow next to the “Transition Sound” icon —  — I get a selection of stock sounds. I'm selecting the “Arrow” sound, by clicking on that choice.



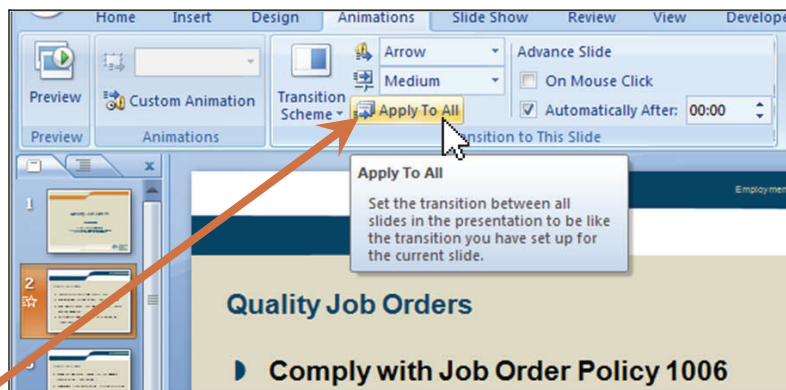
4.) My next step is to indicate how quickly I want those “smooth fades” between slides to be — slow, medium or fast. I’ll click on the “Transition Speed” icon for those choices and then confirm “**Medium**” by clicking on that choice.



5.) Now I’ll determine how long the presentation spends on each slide. In the **Advance Slide** part of the **Transition to This Slide** section of the **Animations** tab, I’ll click in the checkbox “**Automatically After:**” and use the up arrow to pick an advance timing of 5 seconds.



6.) So far, all I’ve done is specify various parameters for the transition from Slide #1 to Slide #2. The last step in creating a “self-running” presentation is to extend those transition choices over the entire presentation, by clicking on the “**Apply To All**” icon, as shown at right.



7.) As can be seen by the “**Play Animations**” icons showing on each thumbnail slide image, this presentation now has all the above animations — sound, transition scheme, timing, etc. — attached to each slide, and is truly “self-running.”

